

RESIDENTIAL Schlüterstr. 80, Berlin

Performance

Development Consulting, Project Management

Project Data

Performance Period

2015-2023

GFA

5.750 m²

Consultant

Carsten Grauel

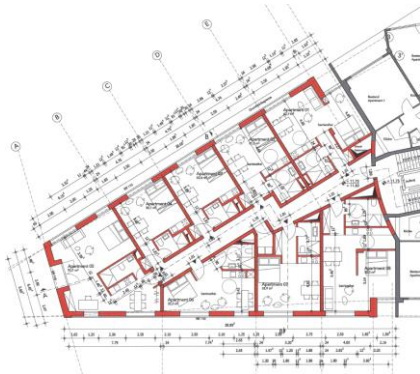
Client

N.N.



The project is located in Berlin-Charlottenburg and is an extension to an apartment building from the 1960s with 72 residential units, adding 48 new apartments and one commercial unit.

GC was commissioned for development consulting and project management. The valid development plan prohibited construction on the tip of the property, even though the historical city plan had provided for it. Through a multi-year coordination process with the authorities, together with Axthelm-Rolvien architects, we secured approval at the end of 2021, and construction could then begin.



The floors of the new building were planned to be connected to the existing staircase of the old building. This eliminated the need for a separate staircase, resulting in a higher utilization of floor space and a pleasantly high ground floor for the commercial unit.

Goals were:

- Obtaining building rights
- Planning optimization with comprehensive quality assurance
- Conducting neighborhood coordination
- Identifying potential savings
- Ongoing quality control during execution

